

Local Plan review consultation

6th March 2018 – City Hall



Welcome

House keeping and safety

Programme

- **6:10 Introduction to Local Plan review consultation**
 - Current local plan
 - Reasons for the review
 - The new local plan
 - Timetable
 - Consultation programme
 - Content
 - Development strategy
 - Delivering new homes
 - Economy and employment land
 - Health and well being
 - Resilience
- **6:40 Break out discussion**
- **7:25 Feedback from discussion**
- **7:40 Final questions and close (7:45)**

At 6:40...

3 questions:

About the Local Plan review consultation

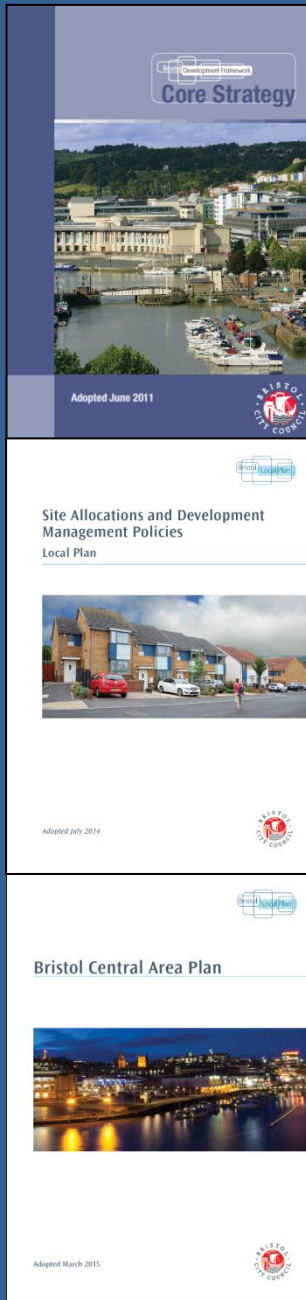
3 suggestions:

How do we maintain and enhance the diversity of land uses, services and infrastructure in the city whilst making the best use of land to deliver new homes?

Any other comments – write them on a Post-it note

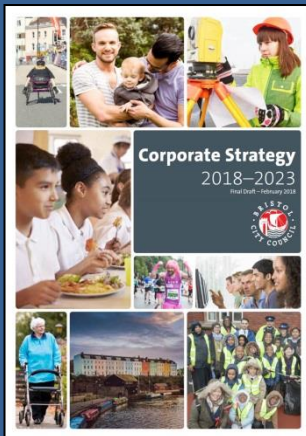
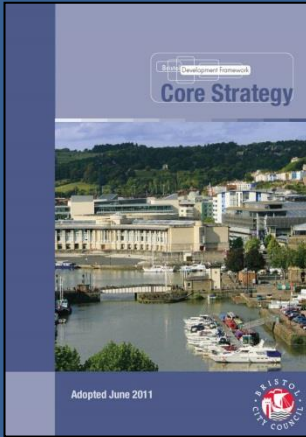
Current Local Plan

- Plans adopted between June 2011 and March 2015
- Replaced the 1997 Bristol Local Plan providing up to date coverage
- Set a direction to 2026
- Aspires to 30,600 new homes by 2026
- Allocates land to provide more than 8,000 new homes
- 115 policies guide development:
 - Approach to new homes
 - Sustainable design and construction
 - High quality urban design
 - Green infrastructure
 - Centres and retailing
 - Economy and employment

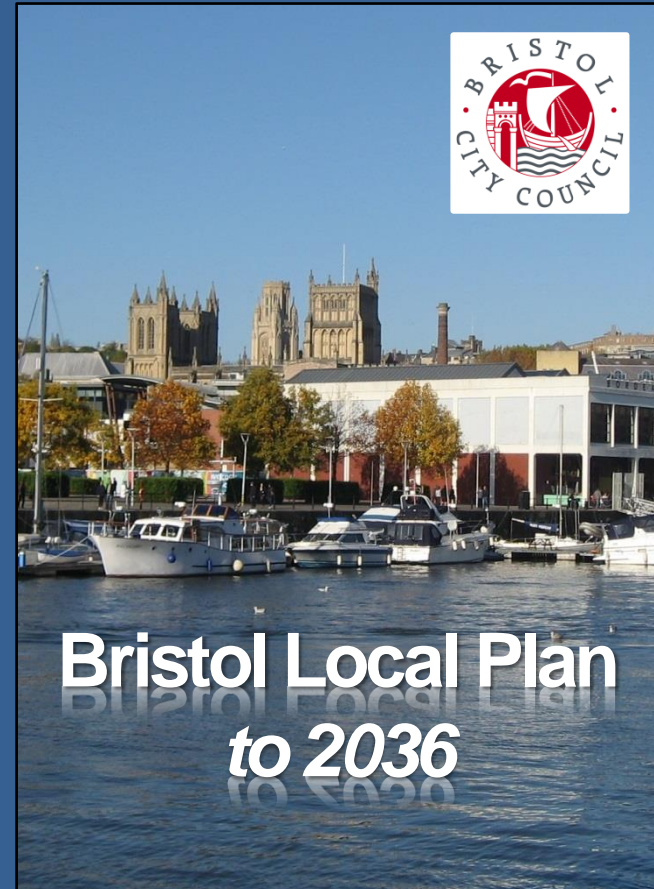


Reasons for the review

- Core Strategy commitment to interim review
- Joint Spatial Plan
- National Planning Policy (including current NPPF update process)
- Bristol City Council Corporate Strategy



New Local Plan



Joint Spatial Plan	Local Plan Review	
Submit to Secretary of State (end March 2018)	Local Plan review - consultation (stage 1)	February - April 2018
Examination hearings (October/November 2018)	Local Plan review consultation (stage 2)	October - December 2018
ADOPTION (May 2019)	PUBLICATION April 2019	
	Submission to Secretary of State	September 2019
	Examination hearings	January 2020
	Modifications	
	ADOPT new local plan	July 2020

Two main consultation phases

Feb – Apr 2018

- Proposed development strategy
- Proposals for new and updated policies

Oct – Dec 2018

- Draft plan
- Site allocation proposals
- Proposed policy designations

Urban Living

- Replaces SPD1
- Creation of characterful urban areas where people can live, work and socialise, relying on sustainable transport
- Parallel consultation

URBAN LIVING SPD

Making successful places at higher densities



Local Plan review – consultation document



Bristol Local Plan Review



Consultation
February 2018



- 37 proposals for new and updated policies
- Proposal to retain 77 existing policies

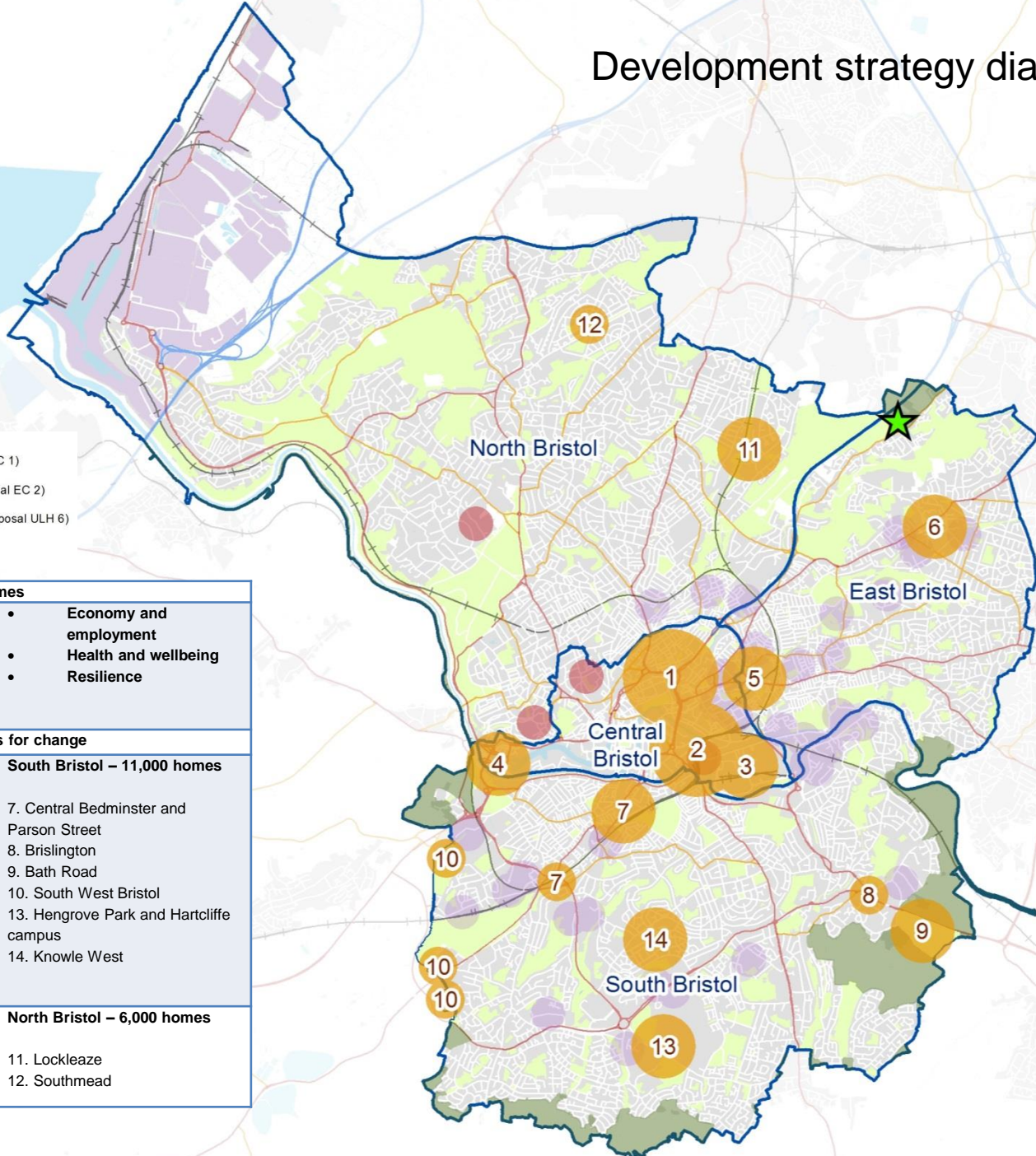
Themes

- Development strategy
- Delivering new homes
- Economy and employment land
- Health and well-being
- Resilience

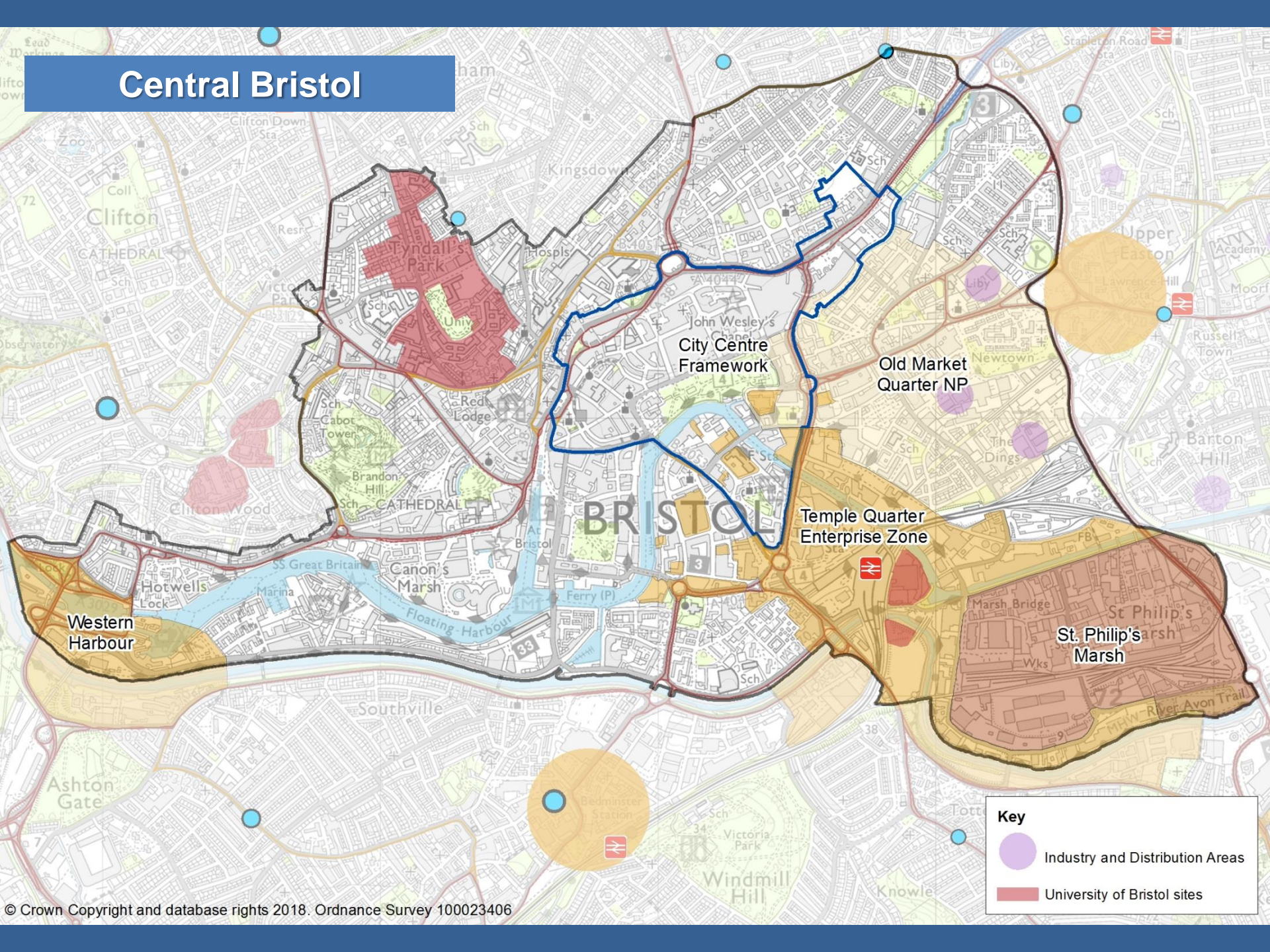
Development strategy diagram

- Avonmouth Industrial Area (Proposal EC 1)
- Industry and Distribution Areas (Proposal EC 2)
- Specialist student accommodation (Proposal ULH 6)
- Feed Bristol (Proposal RES 5)

Themes	
<ul style="list-style-type: none"> • Inclusive growth and development • Delivery of 33,500+ homes • Urban living across the city 	<ul style="list-style-type: none"> • Economy and employment • Health and wellbeing • Resilience
Key locations for change	
Central Bristol – 13,500 homes	South Bristol – 11,000 homes
1. Bristol City Centre 2. Bristol Temple Quarter 3. St Philip's Marsh 4. Western Harbour	7. Central Bedminster and Parson Street 8. Brislington 9. Bath Road 10. South West Bristol 13. Hengrove Park and Hartcliffe campus 14. Knowle West
East Bristol – 5,000 homes	North Bristol – 6,000 homes
5. Lawrence Hill 6. Central Fishponds	11. Lockleaze 12. Southmead



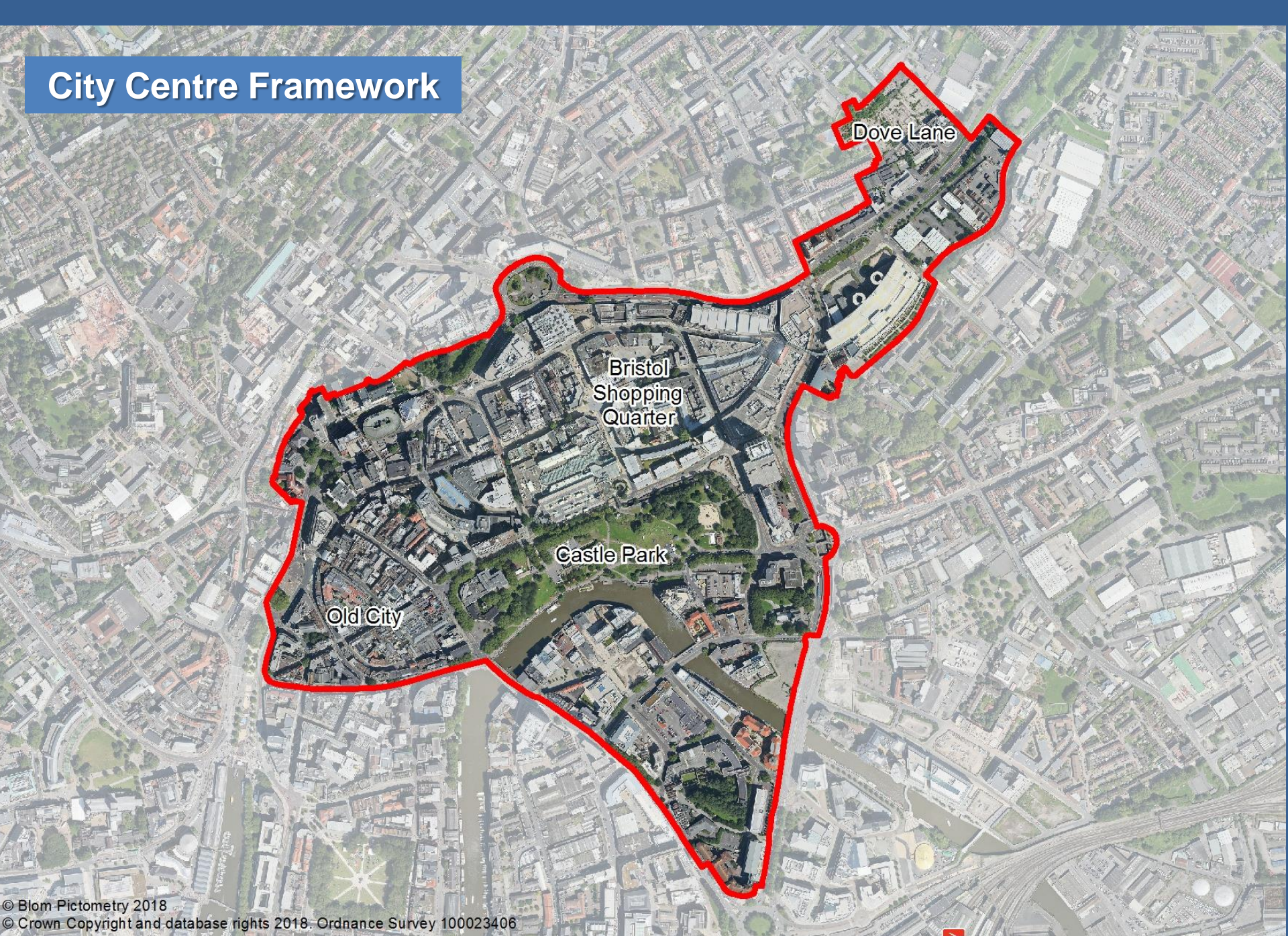
Central Bristol



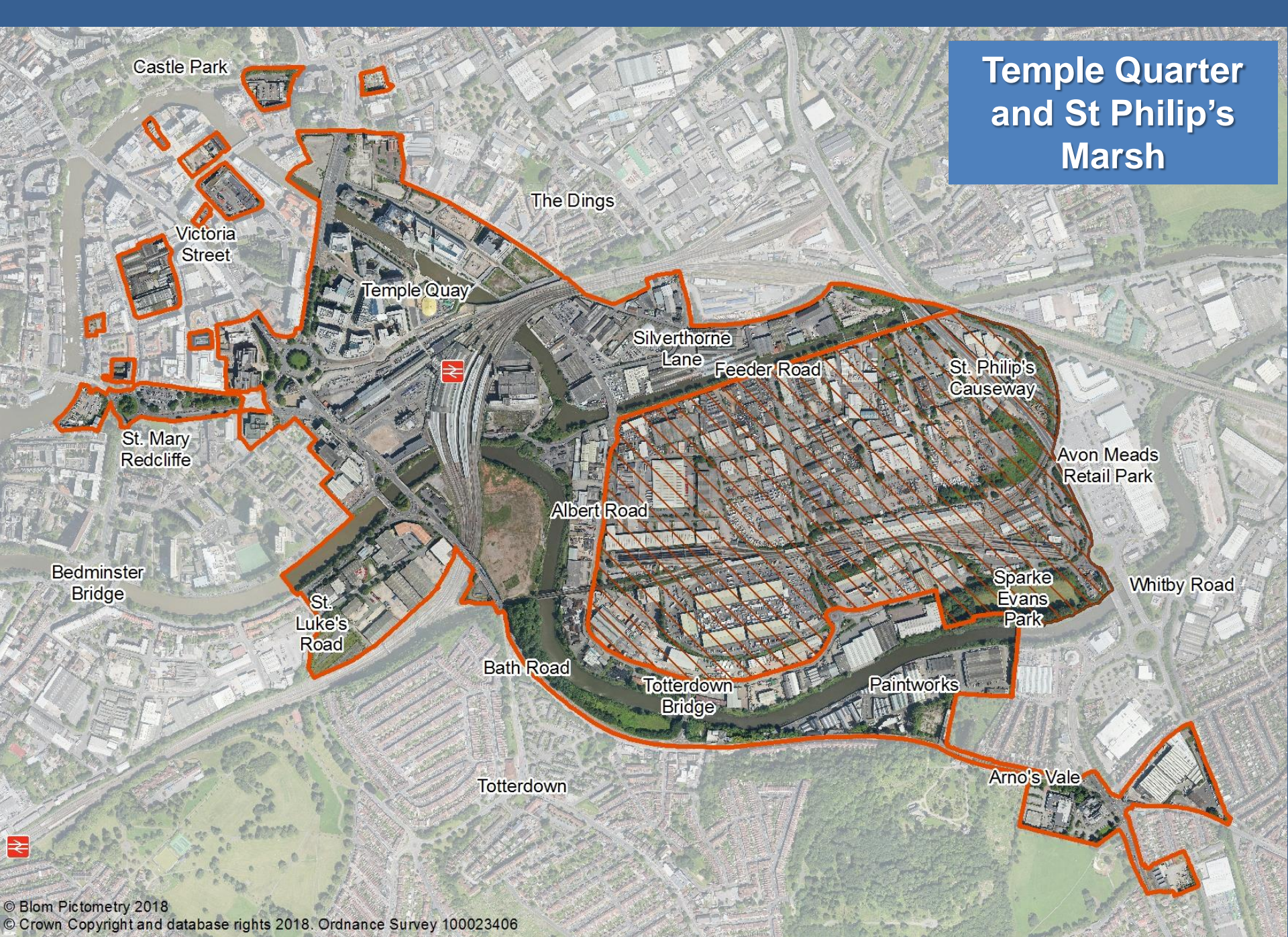
Key

- Industry and Distribution Areas
- University of Bristol sites

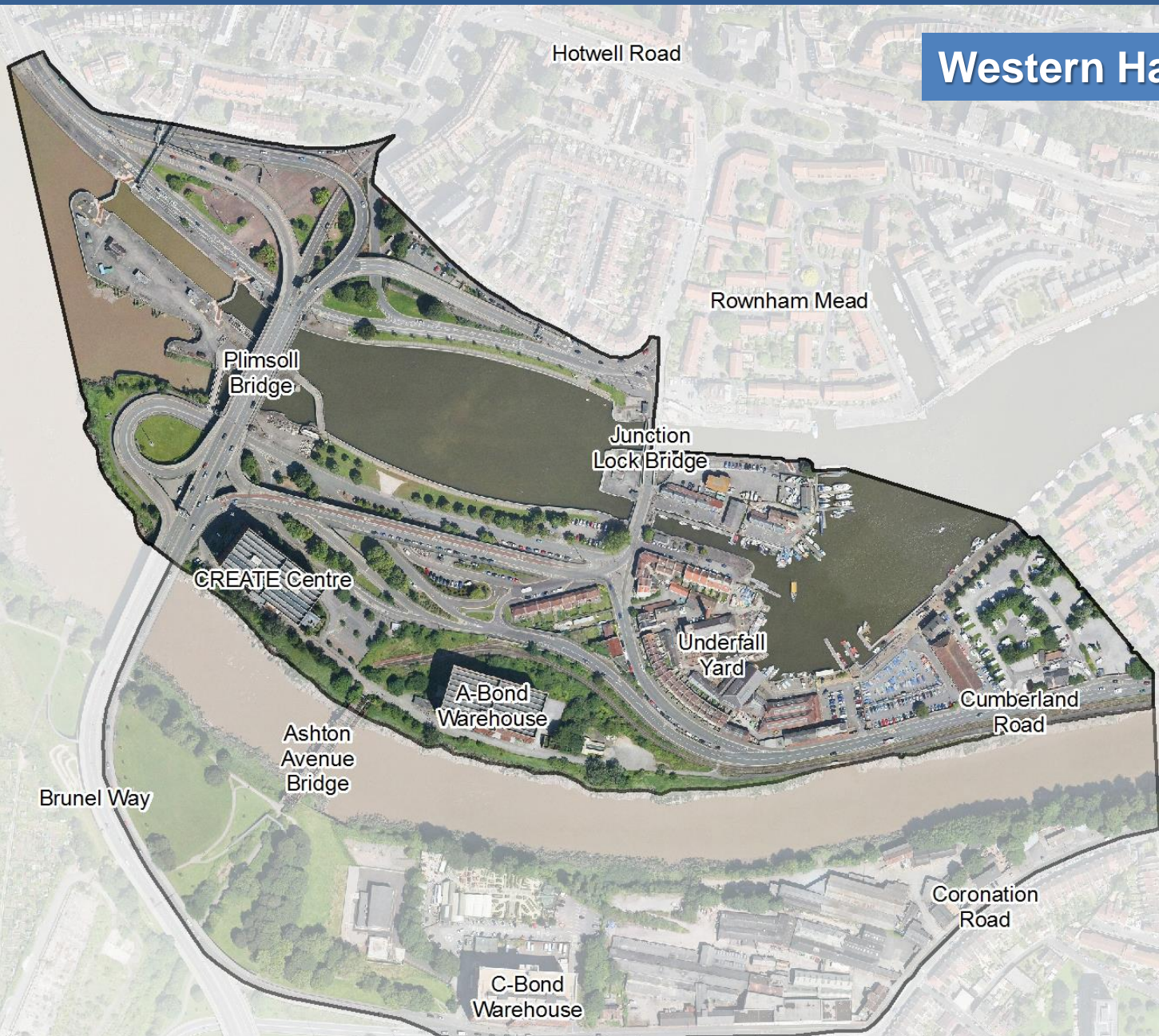
City Centre Framework



Temple Quarter and St Philip's Marsh



Western Harbour



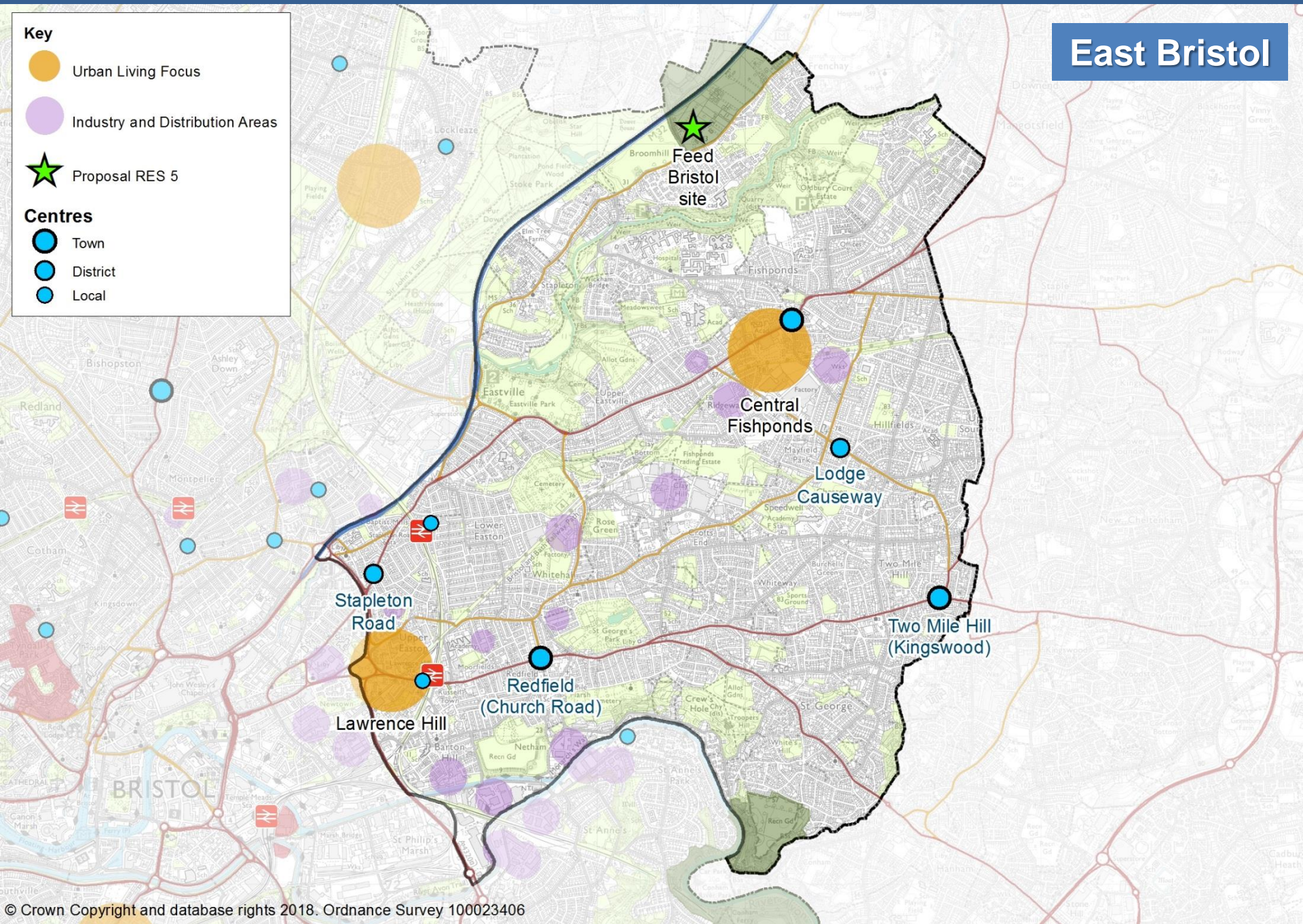
East Bristol

Key

- Urban Living Focus
- Industry and Distribution Areas
- Proposal RES 5

Centres

- Town
- District
- Local



Lawrence Hill



Central Fishponds

Bristol
Metropolitan
Academy

Channons Hill
Retail Park

Morrisons

Fishponds

Beechwood
Road

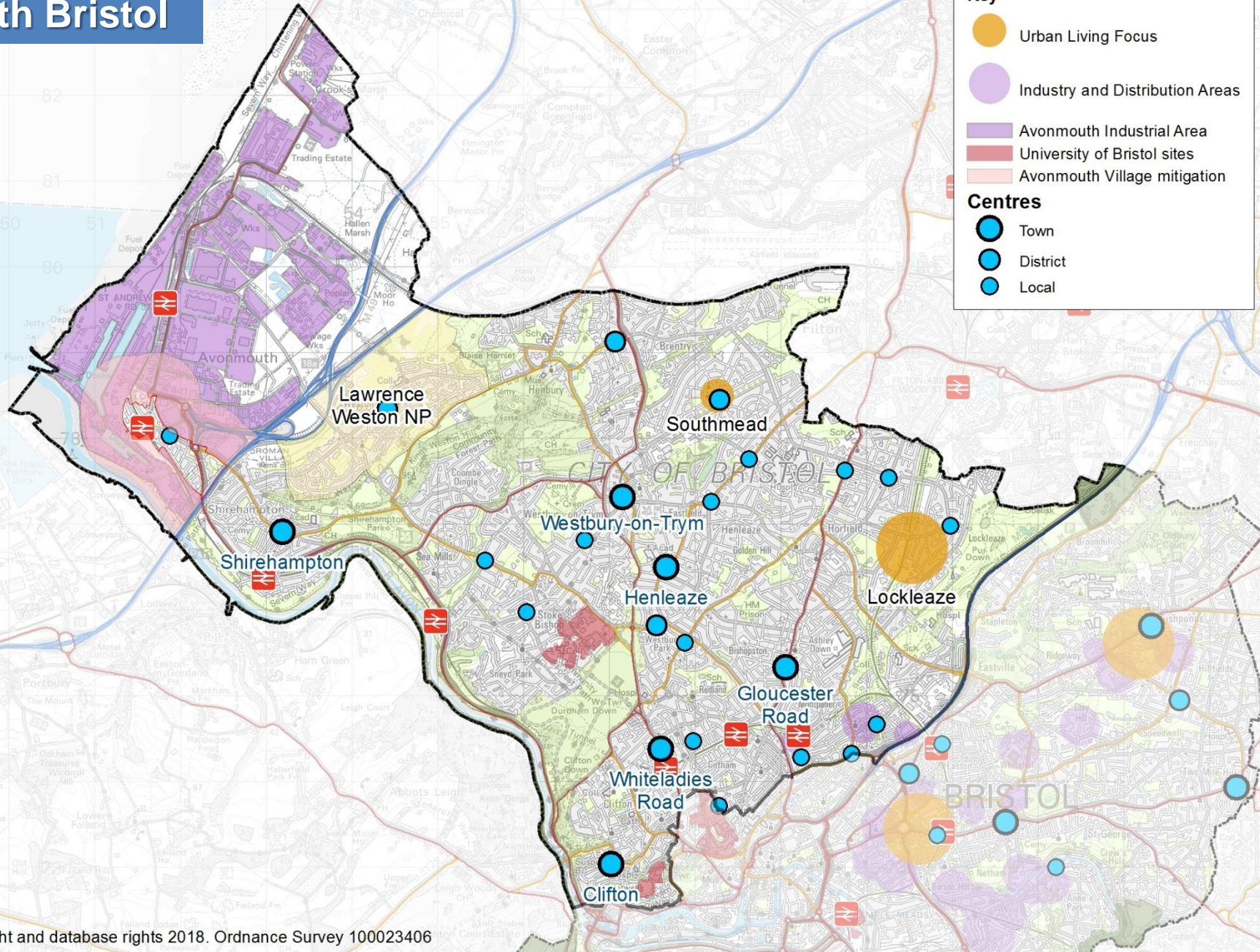
Railway Path

Beacon Tower

Brentry Road

Goodneston
Road

North Bristol



Southmead



Glencoyne Square

Pen Park Road

Arnside Road (Southmead)

Southmead Community Centre

Concorde Drive

Shetland Road

Doncaster Road

Monks Park Avenue

Badock's Wood

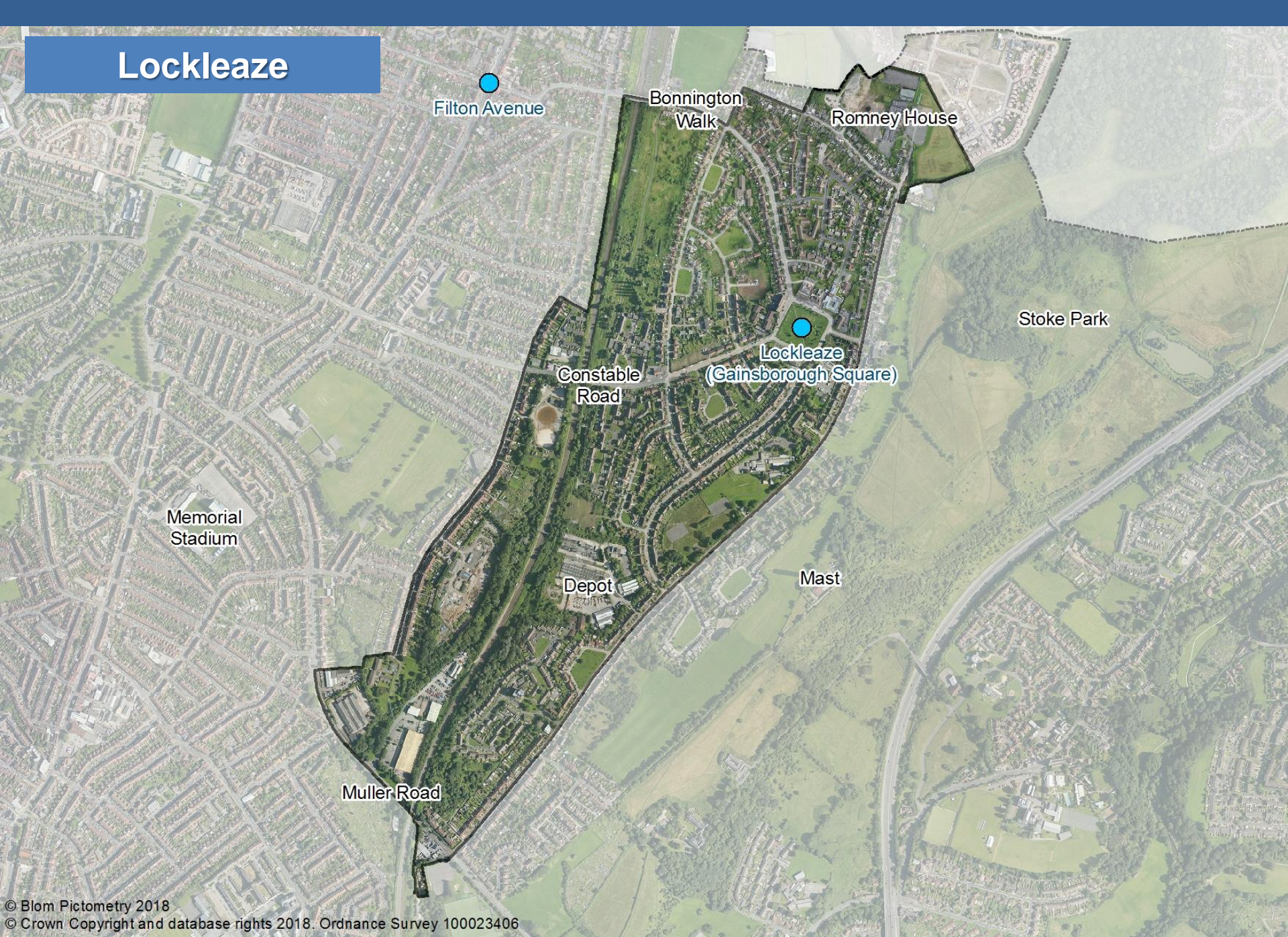
Southmead Road

Southmead Hospital

Henleaze Lake

Kelston Road

Lockleaze



Filton Avenue

Bonnington Walk

Romney House

Stoke Park

Lockleaze
(Gainsborough Square)

Constable Road

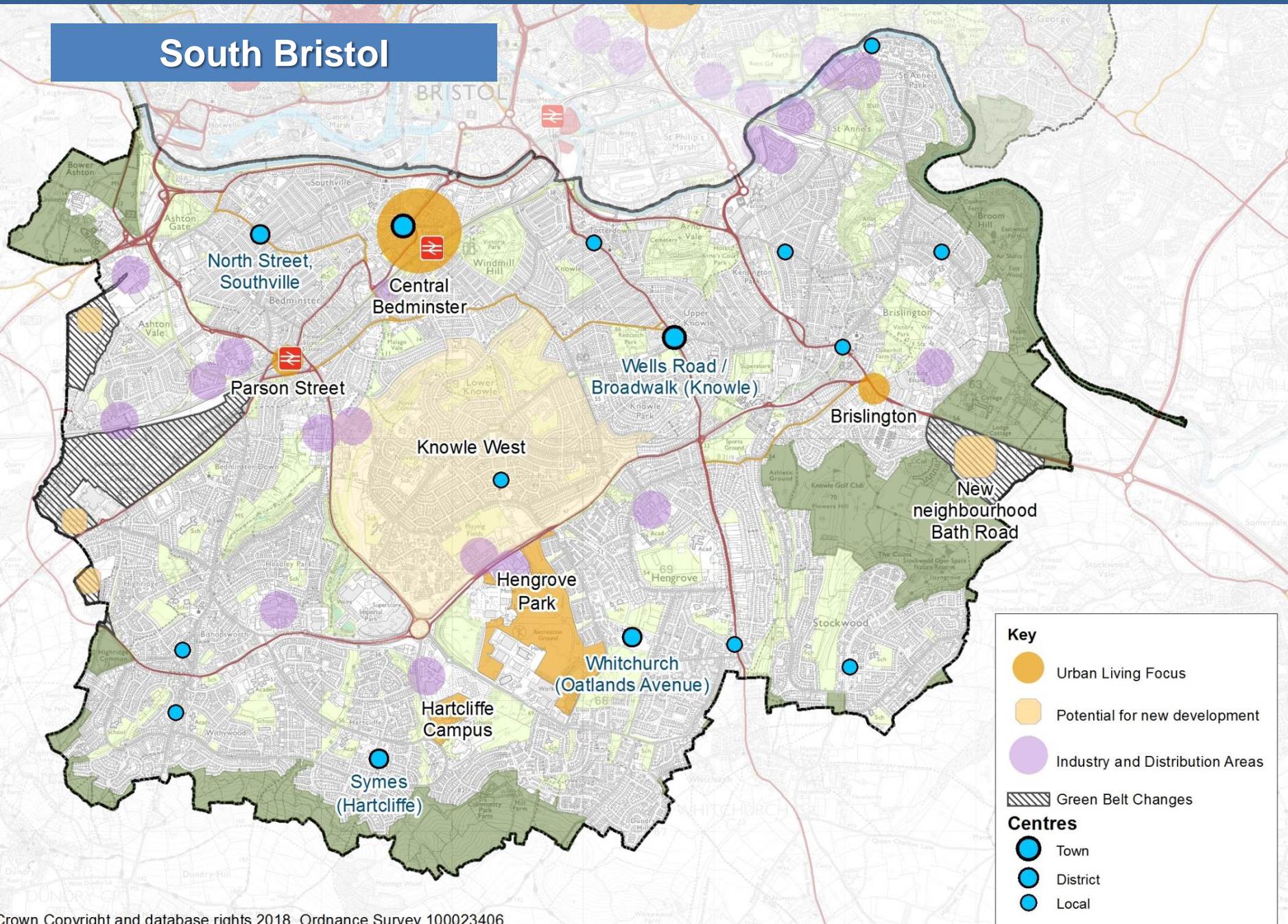
Memorial Stadium

Depot

Mast

Muller Road

South Bristol



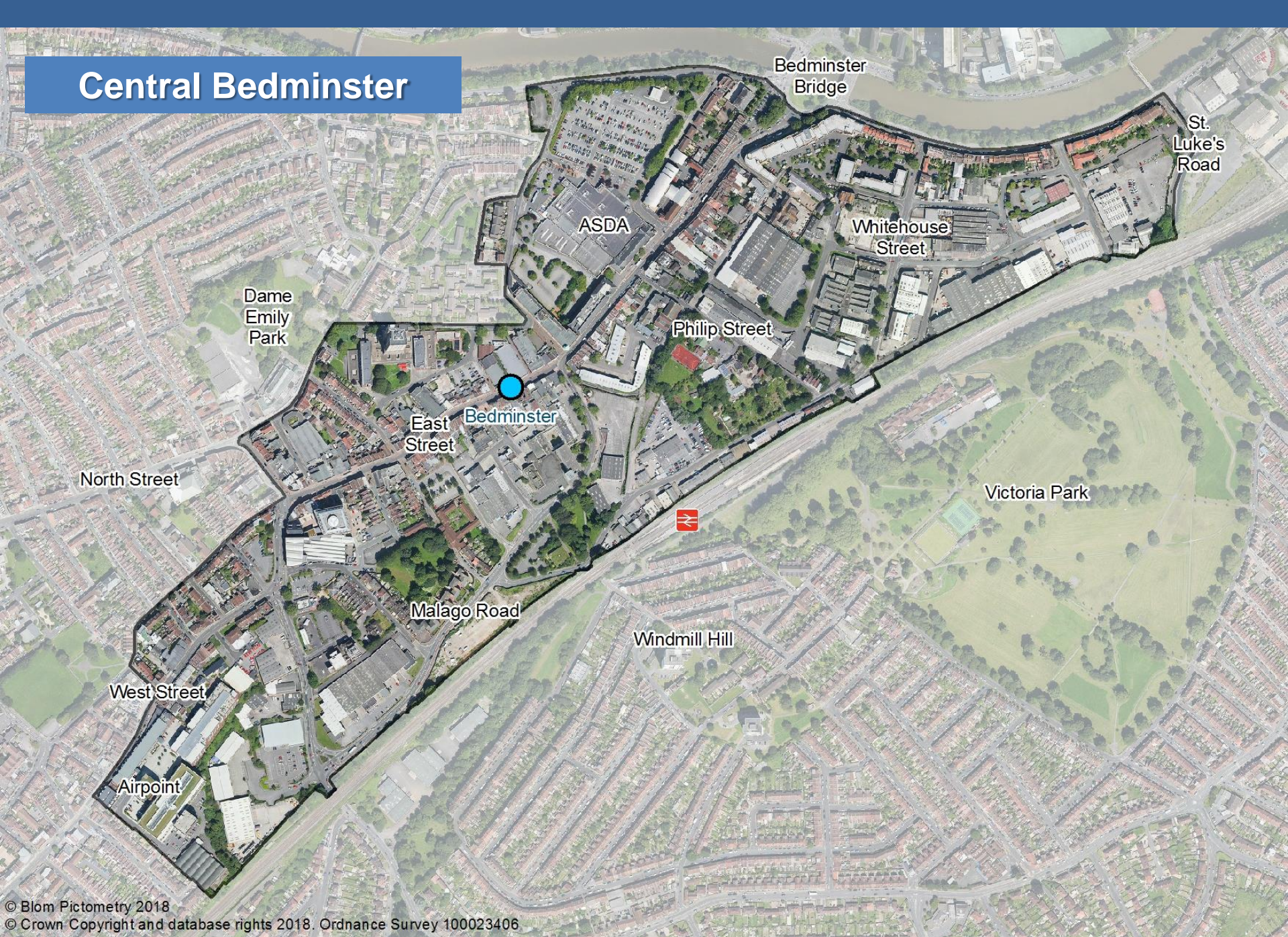
Key

- Urban Living Focus
- Potential for new development
- Industry and Distribution Areas
- Green Belt Changes

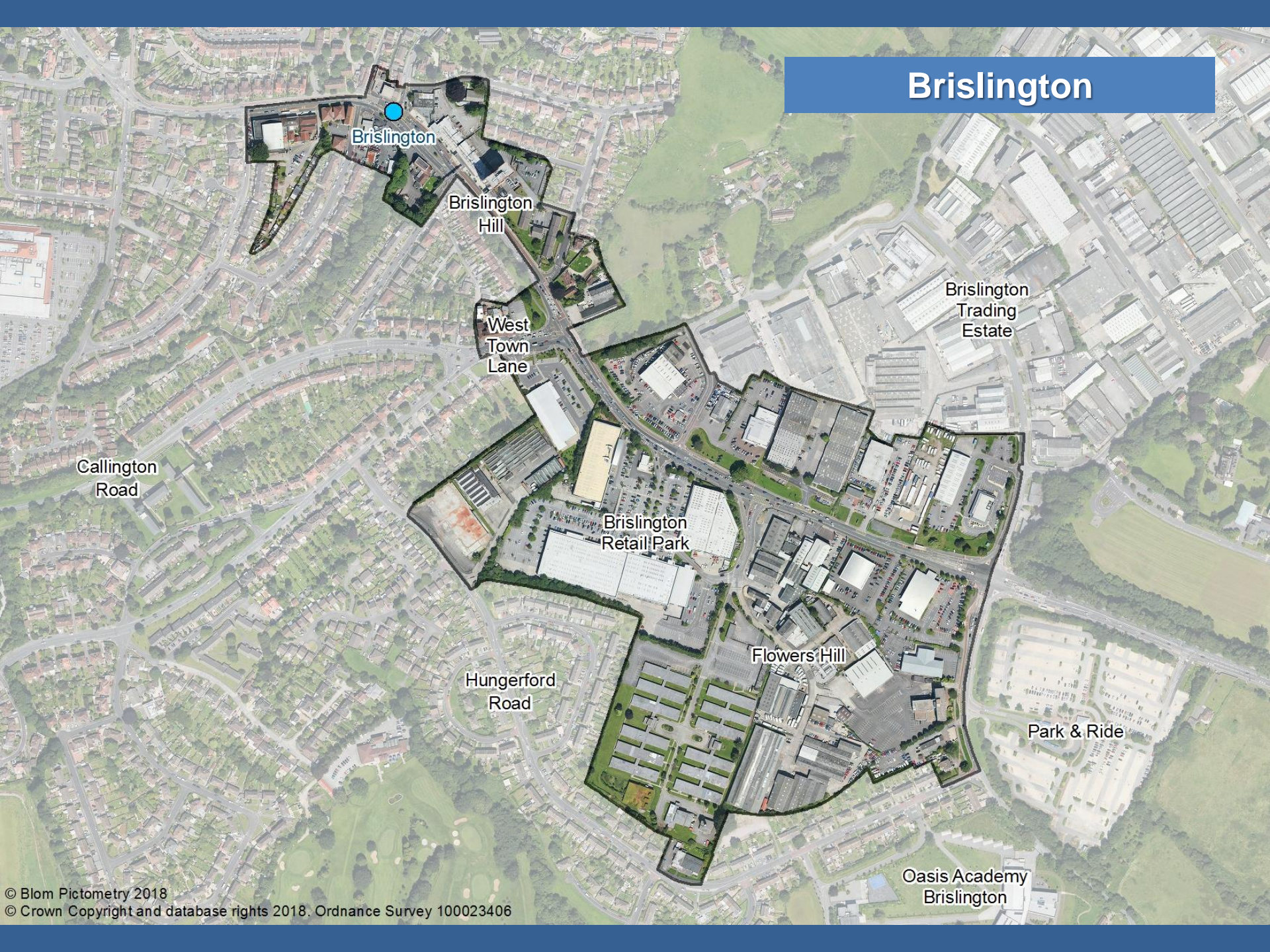
Centres

- Town
- District
- Local

Central Bedminster



Brislington



Brislington

Brislington Hill

West Town Lane

Callington Road

Brislington Retail Park

Brislington Trading Estate

Hungerford Road

Flowers Hill

Park & Ride

Oasis Academy
Brislington

Bath Road, Brislington



A4 Bath Road

Park & Ride

Oasis Academy
Brislington

Allotments
(retained)

Garden centre

Scotland
Bottom

Scotland Lane

BATH AND
NORTH EAST
SOMERSET

Green Belt changes at SW Bristol



Hengrove Park and Hartcliffe Campus



Knowle West

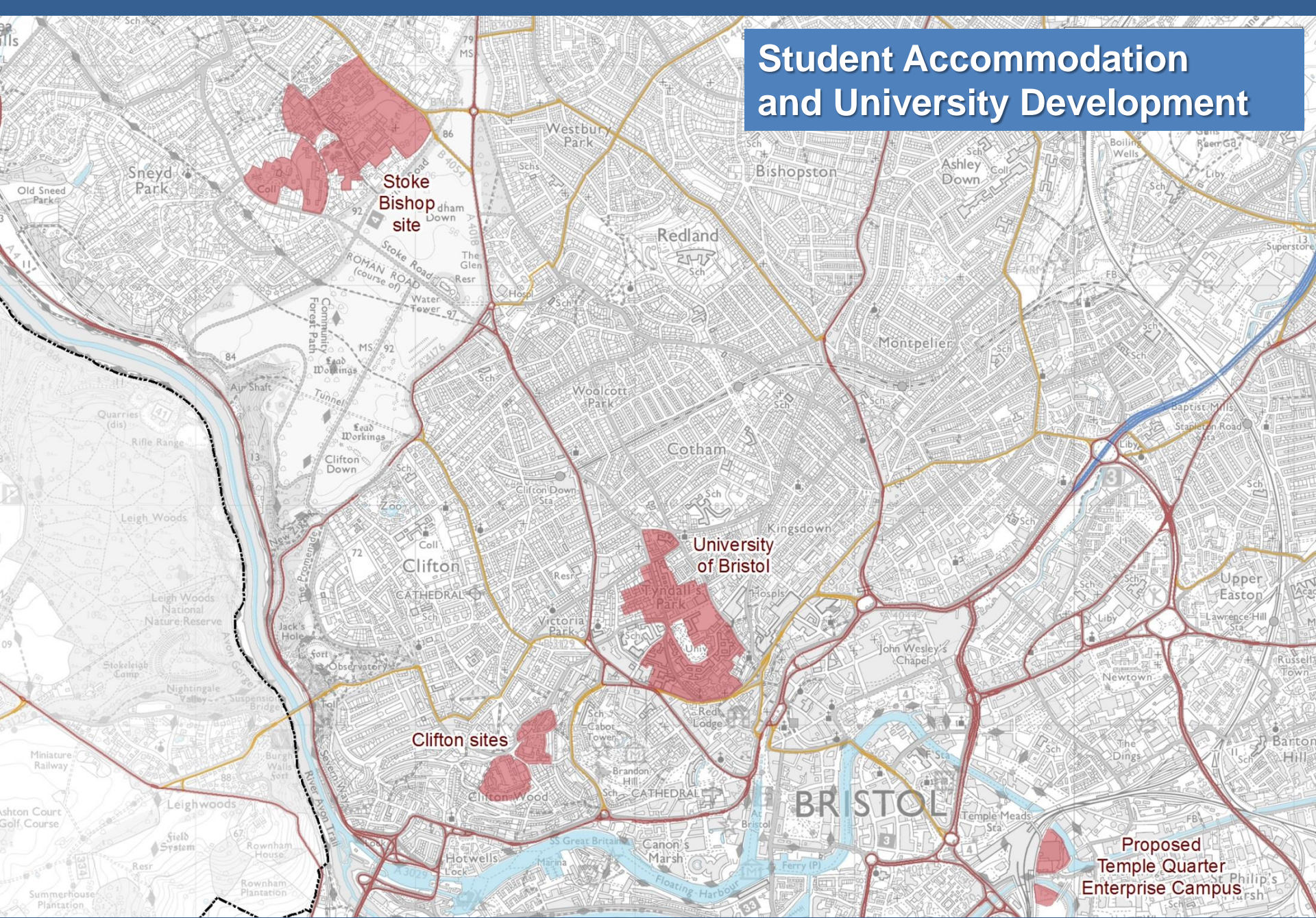


Policy Proposals

Delivering homes through urban living

- New homes
- Urban living
- Tall Buildings
- Fire Safety
- Managing student housing and University development
- Older people's housing
- Self build accommodation
- Accessible homes

Student Accommodation and University Development



Stoke
Bishop
site

University
of Bristol

Clifton sites

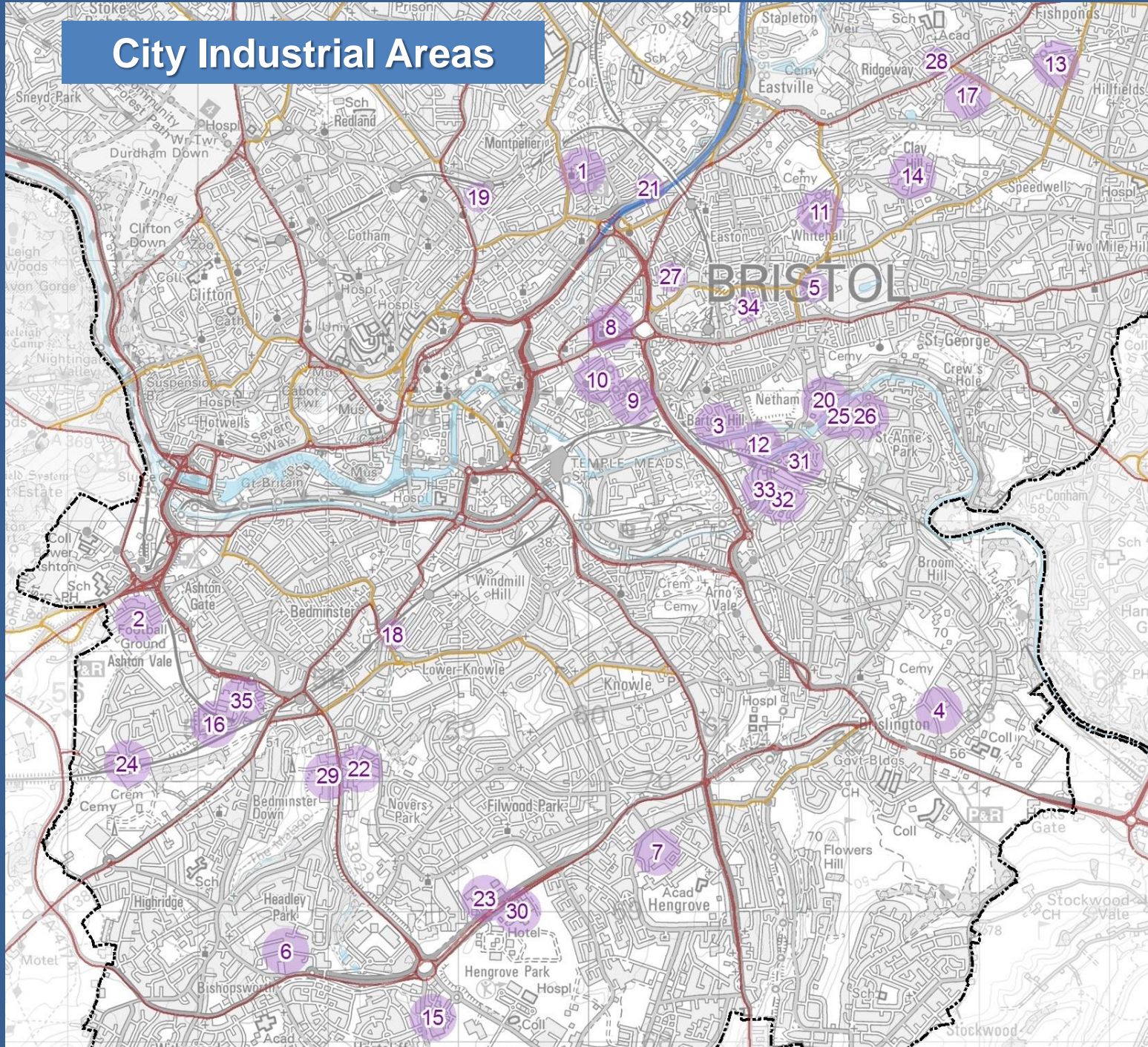
Proposed
Temple Quarter
Enterprise Campus

Policy Proposals

Economy and employment land

- Central Bristol
- Avonmouth Industrial Areas including Bristol Port
- The City's core industrial estates
- New work space
- Digital connectivity

City Industrial Areas



Health and well being

- Air quality
- New protection for open space
- Takeaways

Resilience

- Climate change
- Food Systems – food growing

Break out discussion

3 questions:

About the Local Plan review consultation

3 suggestions:

How do we maintain and enhance the diversity of land uses, services and infrastructure in the city whilst making the best use of land to deliver new homes?

Any other comments – write them on a Post-it note

Feedback

Questions

Consultation closes 13th April

www.bristol.gov.uk/localplanreview
blp@bristol.gov.uk

